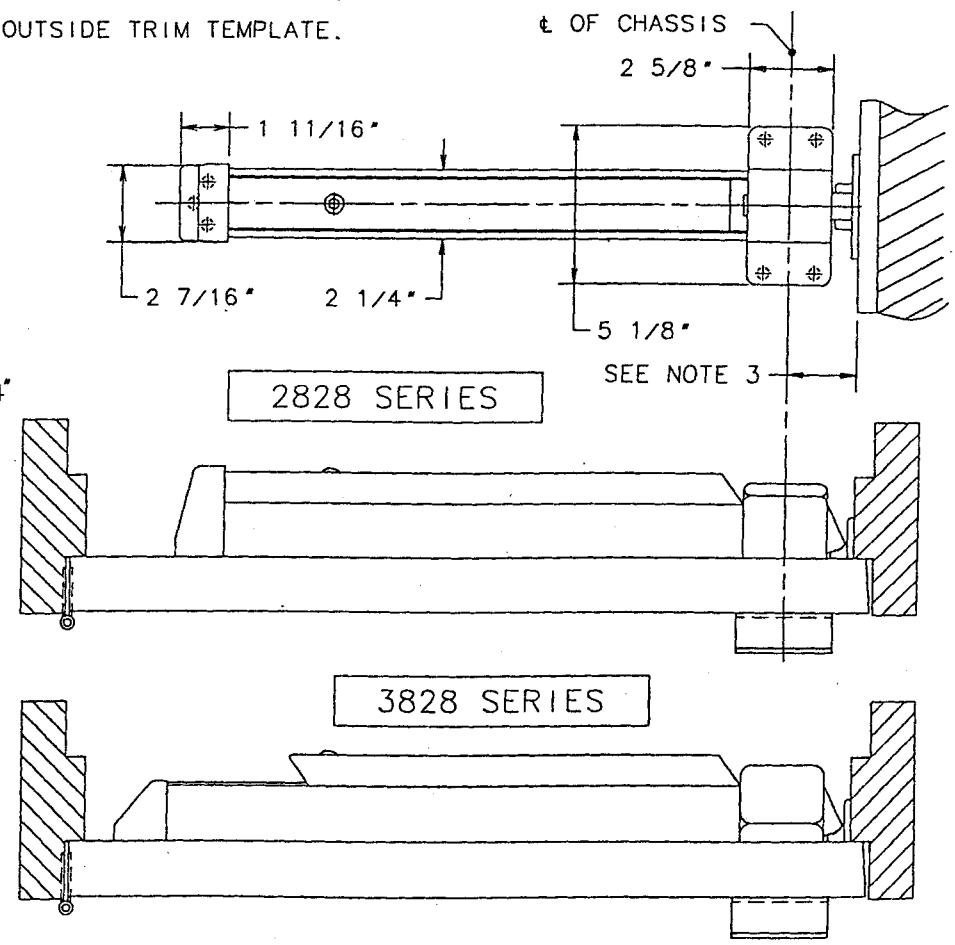
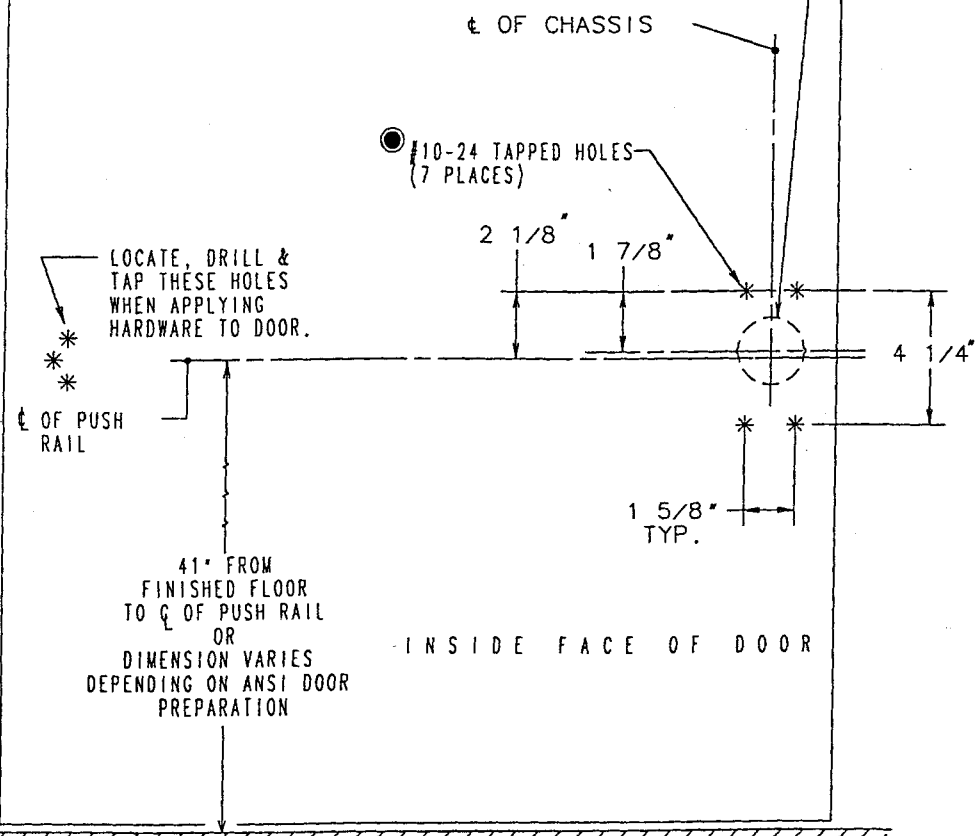


A.N.S.I. DOOR PREPARATION (161 CUT OUT), OR  
 2"-2 1/8" DIA. THROUGH HOLE WHEN 28-K-HTB  
 TRIM IS USED.

ATTENTION:  
 DO NOT DRILL OR TAP HOLES  
 WHEN OUTSIDE TRIM IS USED.  
 SEE OUTSIDE TRIM TEMPLATE.



- ⑤ — SURFACE OF DOOR WHERE EXIT DEVICE IS TO BE APPLIED MUST BE FLUSH.
- ④ — SEE MASTER SHEET No. 4019 FOR AREAS REQUIRING REINFORCEMENTS.
- ③ — SEE STRIKE TEMPLATE FOR MOUNTING LOCATION OF STRIKE.  
 FOR 881 MONITOR STRIKE SEE TEMPLATE # 4386
- ② — ● WE RECOMMEND THAT ALL TAPPED HOLES BE DRILLED & TAPPED IN FIELD.
- ① — TOLERANCE ON ALL DIMENSIONS ±1/32\".

SARGENT & COMPANY		NEW HAVEN, CONN. 06511	
TEMPLATE: 2828 & 3828		RELEASE DATE	
RIM TYPE EXIT DEVICES		4 APR 00	
		TEMPLATE NO.	
		4287 D	